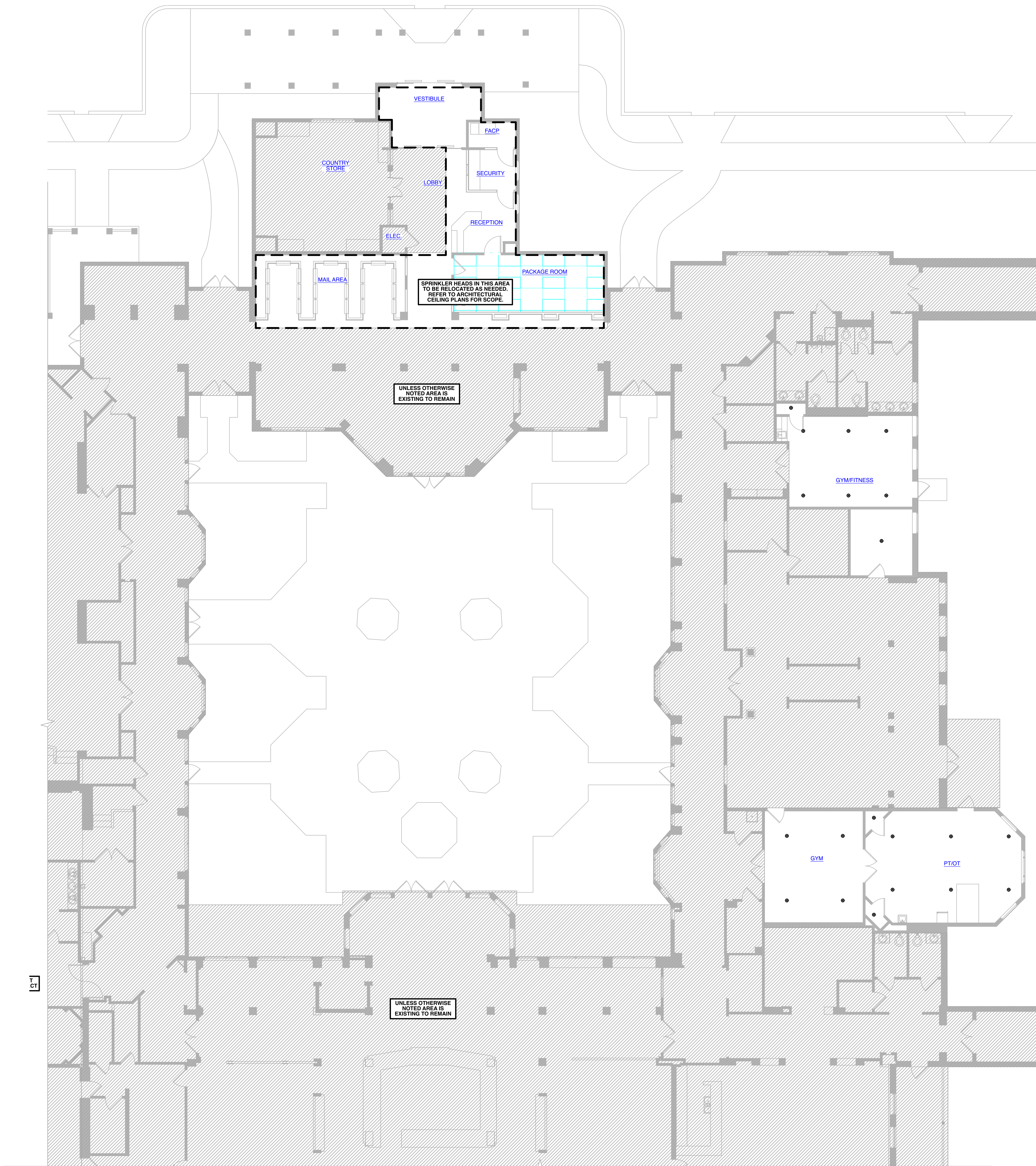


APPROVAL STAMPS



1 PARTIAL SECOND FLOOR  
FIRE PROTECTION PLAN  
SCALE: 1/8" = 1' - 0"

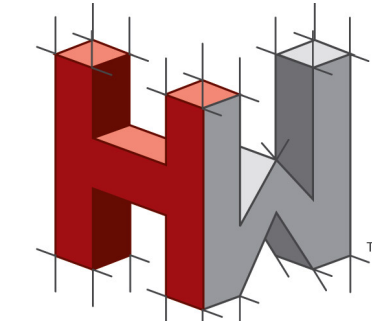
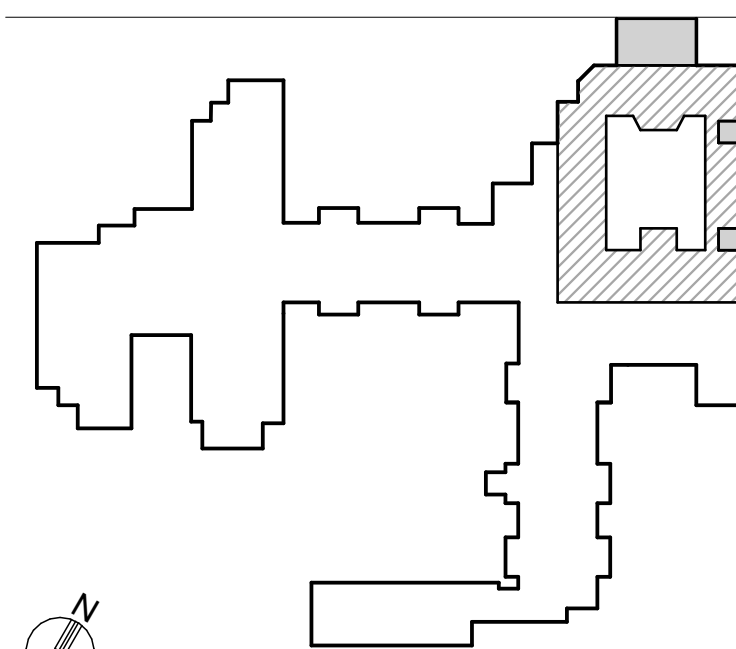
GENERAL NOTES

- COORDINATE ALL SPRINKLER HEAD LOCATIONS WITH LIGHTING, AIR DEVICES, AND REFLECTED CEILING PLANS.
- IT IS THE INTENTION TO MAINTAIN THE CEILING HEIGHTS AS SHOWN ON THE REFLECTED CEILING PLANS.
- SPRINKLER PIPING SHOULD BE INSTALLED AS TIGHT AS POSSIBLE TO THE STRUCTURAL FRAMING.
- SPRINKLER CONTRACTOR SHALL COORDINATE THE ROUTING OF ALL PIPING WITH THE LOCATIONS OF ALL PLUMBING PIPING, HVAC DUCTWORK & EQUIPMENT, ELECTRICAL CONDUIT, AND STRUCTURAL ELEMENTS. COORDINATE WITH ALL TRADES INVOLVED IN THE PROJECT.
- DRAWING PLANS, SCHEMATICS, AND DIAGRAMS INDICATE GENERAL SPRINKLER HEAD LOCATIONS, INDICATED HEAD LOCATIONS, CONFIGURATIONS, AND ARRANGEMENTS ARE FOR REFERENCE ONLY. CONTRACTOR IS RESPONSIBLE TO PROVIDE A COMPLETE SET OF COORDINATION DRAWINGS, INCLUDING ALL PIPE ELEVATIONS, PIPE ROUTINGS, ETC. REQUIRED FOR A COMPLETELY COORDINATED INSTALLATION. CONTRACTOR SHALL COORDINATE ALL LOCATIONS WITH ALL TRADES AND A COORDINATED SET OF PLANS. COORDINATION DRAWINGS SHALL BE SUBMITTED TO THE ARCHITECT AND ENGINEER FOR REVIEW PRIOR TO INSTALLATION.
- ALL SPACES SHALL BE FULLY PROTECTED.
- THE FIRE PROTECTION CONTRACTOR SHALL SUBMIT A HEAD LAYOUT TO THE PROPERTY MANAGER FOR REVIEW PRIOR TO ERECTION OF THE WORK.
- FIRE PROTECTION CONTRACTOR SHALL SUBMIT CALCULATIONS, DRAWINGS, AND SHOP DRAWINGS FOR REVIEW BY THE ENGINEER AND SHALL COORDINATE HIS WORK WITH THE OTHER TRADES.
- THE CONTRACTOR SHALL MAINTAIN AS-BUILT DRAWINGS AND DELIVER THEM TO THE OWNER UPON COMPLETION OF THE PROJECT.
- SPRINKLER CONTRACTOR SHALL BE RESPONSIBLE FOR THE CALCULATION, DESIGN APPROVAL, CONFORMANCE, AND OPERATION OF WET AND/OR DRY FIRE PROTECTION AND/OR SUPPRESSION SYSTEMS. THE PLACEMENT OF THIS INFORMATION ON THE DRAWINGS IS FOR IDENTIFICATION ONLY.
- SPRINKLER CONTRACTOR SHALL PROVIDE A COMPLETE FIRE PROTECTION SYSTEM AS SHOWN ON PLANS AND AS REQUIRED. HE IS SOLELY RESPONSIBLE TO PROVIDE A COMPLETE WORKING SYSTEM DESIGNED AND INSTALLED IN ACCORDANCE WITH NFPA 13, STATE OF PENNSYLVANIA AND LOCAL CODES, AND THE OWNER'S INSURANCE UNDERWRITER'S REQUIREMENT.
- SPRINKLER CONTRACTOR SHALL PAY FOR PERMITS, INSPECTIONS, TESTS AND APPROVALS RELATED TO THE SPRINKLER SYSTEM AS REQUIRED BY ALL AUTHORITIES HAVING JURISDICTION. THIS INCLUDES SUPPLYING ERECTION DRAWINGS TO THE ARCHITECT IN ACCORDANCE WITH THE GENERAL CONDITIONS AND THE MECHANICAL TRADE REQUIREMENTS OF THE PROJECT.
- THE COMPLETE SPRINKLER INSTALLATION SHALL INCLUDE THE FOLLOWING: CONNECTION TO THE FIRE MAIN AS REQUIRED; ALL CONTROL VALVES, CHECK VALVES, ALARM VALVES AND NECESSARY FIRE MAIN WATER MOTOR-DRIVEN FLOW SWITCH APPARATUS AND THE TIE VALVES, FITTINGS, AND SPRINKLER HEADS INCLUDING SPARE HEADS IN A CABINET, ALL INSERTS, HANGERS AND SUPPORTS FOR PIPE AND EQUIPMENT, ALL HANGERS AND INSERTS SHALL MEET THE APPROVAL OF ALL AUTHORITIES HAVING JURISDICTION.
- SPRINKLER HEADS SHALL BE APPROVED TYPE OF PROPER TEMPERATURE RATING FOR ITS PARTICULAR LOCATION. FIRE DEPARTMENT CONNECTIONS SHALL BE CHROME PLATED BRASS, WITH CONNECTIONS IN ACCORDANCE WITH THE LOCAL FIRE DEPARTMENT. REGULATING ALL CONTROL, DRIVING, TEST VALVES, AND ALARM VALVES SHALL BE PROVIDED WITH IDENTIFICATION SIGNS OF THE STANDARD DESIGN ADOPTED BY THE AUTOMATIC SPRINKLER INDUSTRY.

FIRE PROTECTION SYMBOLS

- CONCEALED SPRINKLER HEAD W/ COVER PLATE
- x UPRIGHT WET SPRINKLER HEAD
- x<sub>DN</sub> UPRIGHT DRY SPRINKLER HEAD
- x<sub>WM</sub> WALL MOUNTED DRY SPRINKLER HEAD

KEYPLAN



HOLSTEIN WHITE  
ENGINEERS  
3800 Horizon Blvd., Suite 503 O: (215)-322-7711  
Trevose, PA 19053 F: (215)-322-7709  
www.holsteinwhite.com



Professional Certification. I hereby certify that these documents were prepared or approved by me, and that I am a duly licensed professional engineer under the laws of the State of Maryland, License No. 43254, Expiration Date: 11/15/2027.

PROJECT TITLE  
**Collington**  
A KENDAL AFFILIATE

ENABLING RENOVATION  
CONSTRUCTION DOCUMENTS

**SFCS** Architecture  
Engineering  
Planning  
Interiors

SFCS Inc. • 305 South Jefferson Street  
Roanoke, Virginia 24011.2003  
540.344.6664 • Fax 540.343.6925  
www.sfcs.com

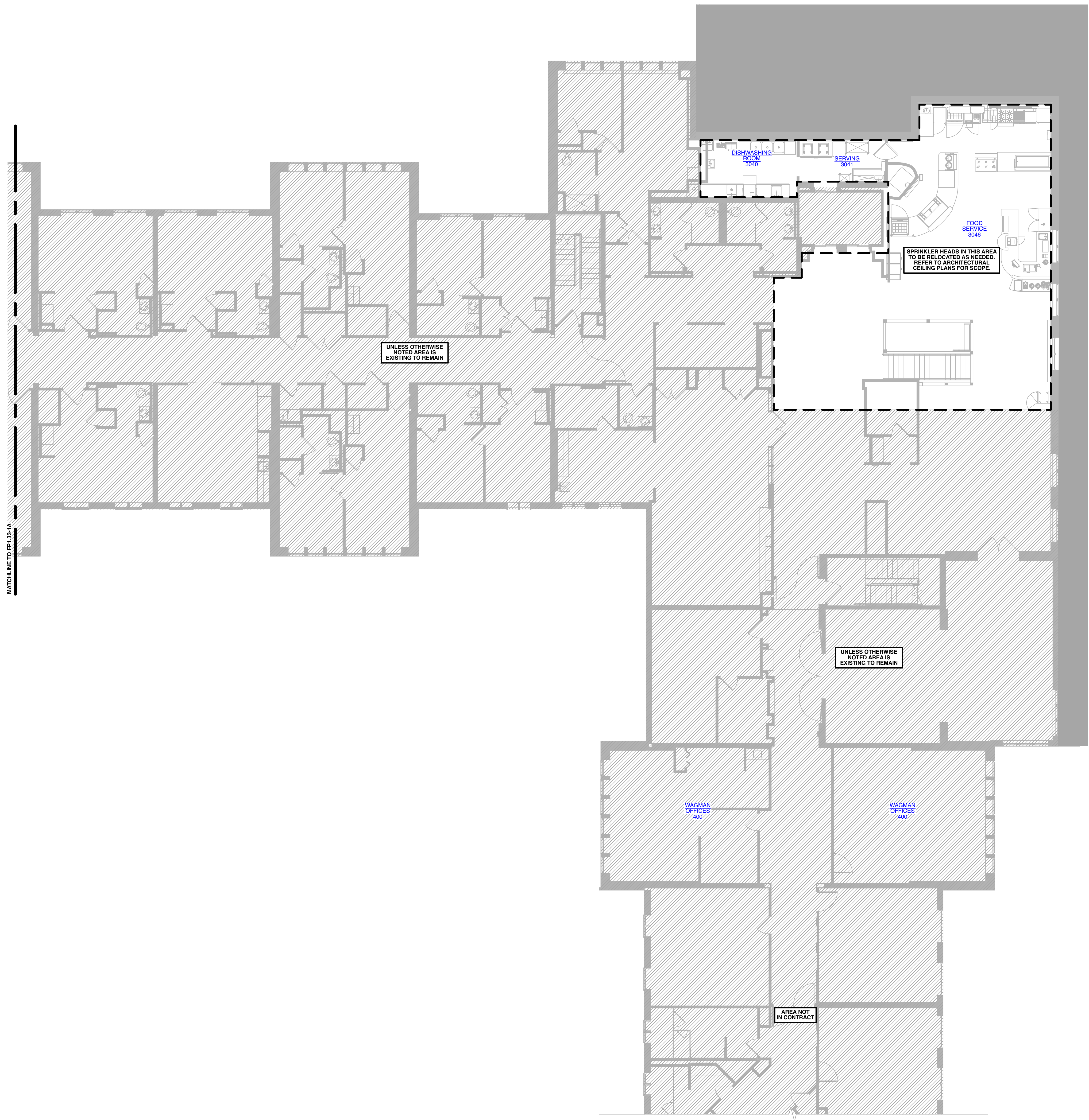
DESIGNER :	DRAWN :	LBEP
ARCHITECT :	CHECKED :	JB
ENGINEER :	LBEP	APPROVED : SW
NO.	REVISION DESCRIPTION	DATE

DRAWING TITLE  
PARTIAL SECOND FLOOR FIRE  
PROTECTION PLAN

DATE:	DRAWING
MAY 28, 2026	FP1.20-1A
COMM. NO.	18135.00



APPROVAL STAMPS



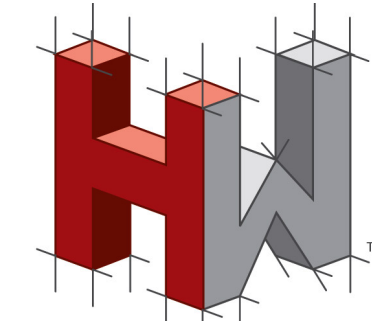
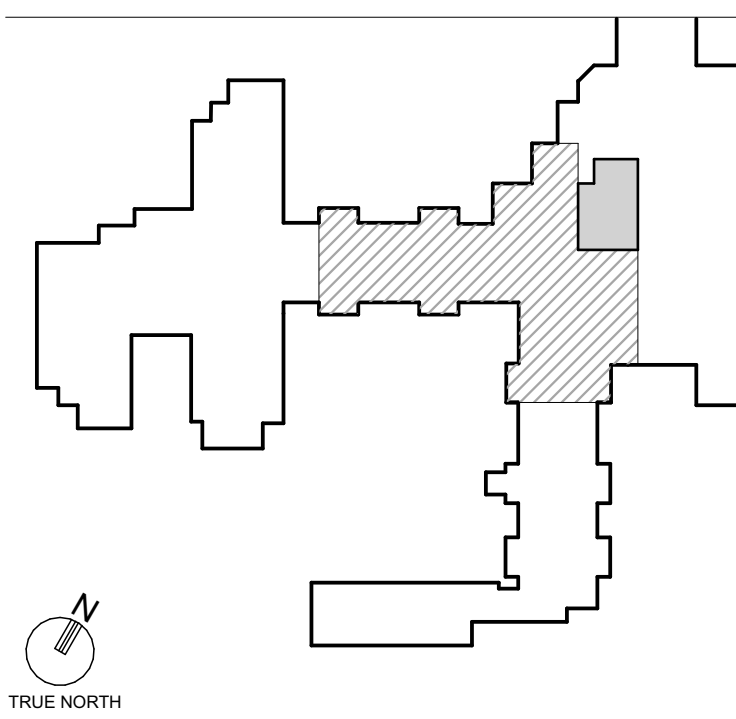
GENERAL NOTES

- COORDINATE ALL SPRINKLER HEAD LOCATIONS WITH LIGHTING, AIR DEVICES AND REFLECTED CEILING PLANS.
- IT IS THE INTENTION TO MAINTAIN THE CEILING HEIGHTS AS SHOWN ON THE REFLECTED CEILING PLANS.
- SPRINKLER PIPING SHOULD BE INSTALLED AS TIGHT AS POSSIBLE TO THE STRUCTURAL FRAMING.
- SPRINKLER CONTRACTOR SHALL COORDINATE THE ROUTING OF ALL PIPING WITH THE LOCATIONS OF ALL PLUMBING PIPING, HVAC DUCTWORK & EQUIPMENT, ELECTRICAL CONDUIT, AND STRUCTURAL ELEMENTS. COORDINATE WITH ALL TRADES INVOLVED IN THE PROJECT.
- DRAWING PLANS, SCHEMATICS, AND DIAGRAMS INDICATE GENERAL SPRINKLER HEAD LOCATIONS. INDICATED HEAD LOCATIONS, CONFIGURATIONS, AND ARRANGEMENTS ARE FOR REFERENCE ONLY. CONTRACTOR IS RESPONSIBLE TO PROVIDE A COMPLETE SET OF COORDINATION DRAWINGS, INCLUDING ALL PIPE ELEVATIONS, PIPE ROUTINGS, ETC. REQUIRED FOR A COMPLETELY COORDINATED INSTALLATION. CONTRACTOR SHALL COORDINATE ALL LOCATIONS WITH ALL TRADES AND A COORDINATED SET OF PLANS. COORDINATION DRAWINGS SHALL BE SUBMITTED TO THE ARCHITECT AND ENGINEER FOR REVIEW PRIOR TO INSTALLATION.
- ALL SPACES SHALL BE FULLY PROTECTED.
- THE FIRE PROTECTION CONTRACTOR SHALL SUBMIT A HEAD LAYOUT TO THE PROPERTY MANAGER FOR REVIEW PRIOR TO ERECTION OF THE WORK.
- FIRE PROTECTION CONTRACTOR SHALL SUBMIT CALCULATIONS, DRAWINGS, AND SHOP DRAWINGS FOR REVIEW BY THE ENGINEER AND SHALL COORDINATE HIS WORK WITH THE OTHER TRADES.
- THE CONTRACTOR SHALL MAINTAIN AS-BUILT DRAWINGS AND DELIVER THEM TO THE OWNER UPON COMPLETION OF THE PROJECT.
- SPRINKLER CONTRACTOR SHALL BE RESPONSIBLE FOR THE CALCULATION, DESIGN, APPROVAL, CONFORMANCE AND OPERATION OF WET AND/OR DRY FIRE PROTECTION AND/OR SUPPRESSION SYSTEMS. THE PLACEMENT OF THIS INFORMATION ON THE DRAWINGS IS FOR IDENTIFICATION ONLY.
- SPRINKLER CONTRACTOR SHALL PROVIDE A COMPLETE FIRE PROTECTION SYSTEM AS SHOWN ON PLANS AND AS REQUIRED. HE IS SOLELY RESPONSIBLE TO PROVIDE A COMPLETE WORKING SYSTEM DESIGNED AND INSTALLED IN ACCORDANCE WITH NFPA 13, STATE OF PENNSYLVANIA AND LOCAL CODES, AND THE OWNER'S INSURANCE UNDERWRITER'S REQUIREMENT.
- SPRINKLER CONTRACTOR SHALL PAY FOR PERMITS, INSPECTIONS, TESTS AND APPROVALS RELATED TO THE SPRINKLER SYSTEM AS REQUIRED BY ALL AUTHORITIES HAVING JURISDICTION. THIS INCLUDES SUPPLYING ERECTION DRAWINGS TO THE ARCHITECT IN ACCORDANCE WITH THE GENERAL CONDITIONS AND THE MECHANICAL TRADE REQUIREMENTS OF THE PROJECT.
- THE COMPLETE SPRINKLER INSTALLATION SHALL INCLUDE THE FOLLOWING: CONNECTION TO THE FIRE MAINS AS REQUIRED; ALL CONTROL VALVES, CHECK VALVES, ALARM VALVES AND NECESSARY 1/2 IN. WATER MOTOR-DRIVEN FLOW SWITCH APPARATUS AND THE 1/2 IN. VALVES, FITTINGS, AND SPRINKLER HEADS INCLUDING SPARE HEADS IN A CABINET; ALL INSERTS, HANGERS AND SUPPORTS FOR PIPE AND EQUIPMENT; ALL HANGERS AND INSERTS SHALL MEET THE APPROVAL OF ALL AUTHORITIES HAVING JURISDICTION.
- SPRINKLER HEADS SHALL BE APPROVED TYPE OF PROPER TEMPERATURE RATING FOR ITS PARTICULAR LOCATION. FIRE DEPARTMENT CONNECTIONS SHALL BE CHROME PLATED BRASS, WITH CONNECTIONS IN ACCORDANCE WITH THE LOCAL FIRE DEPARTMENT. REGULATING ALL CONTROL DRIVING, TEST VALVES, AND ALARM VALVES SHALL BE PROVIDED WITH IDENTIFICATION SIGNS OF THE STANDARD DESIGN ADOPTED BY THE AUTOMATIC SPRINKLER INDUSTRY.

FIRE PROTECTION SYMBOLS

- CONCEALED SPRINKLER HEAD W/ COVER PLATE
- x UPRIGHT WET SPRINKLER HEAD
- \*<sub>DN</sub> UPRIGHT DRY SPRINKLER HEAD
- \*<sub>WM</sub> WALL MOUNTED DRY SPRINKLER HEAD

KEYPLAN



HOLSTEIN WHITE  
ENGINEERS

3800 Horizon Blvd., Suite 503 O: (215)-322-7711  
Trevose, PA 19053 F: (215)-322-7709  
www.holsteinwhite.com



Professional Certification. I hereby certify that these documents were prepared or approved by me, and that I am a duly licensed professional engineer under the laws of the State of Maryland, License No. 43254, Expiration Date: 01/15/2027

PROJECT TITLE  
**Collington**  
A KENDAL AFFILIATE

ENABLING RENOVATION  
CONSTRUCTION DOCUMENTS

**SFCS** Architecture  
Engineering  
Planning  
Interiors

SFCS Inc. • 305 South Jefferson Street  
Roanoke, Virginia 24011.2003  
540.344.6664 • Fax 540.343.6925  
www.sfcs.com

DESIGNER :	DRAWN :	LBEP
ARCHITECT :	CHECKED :	JB
ENGINEER :	LBEP	APPROVED : SW

NO.	REVISION DESCRIPTION	DATE
-----	----------------------	------

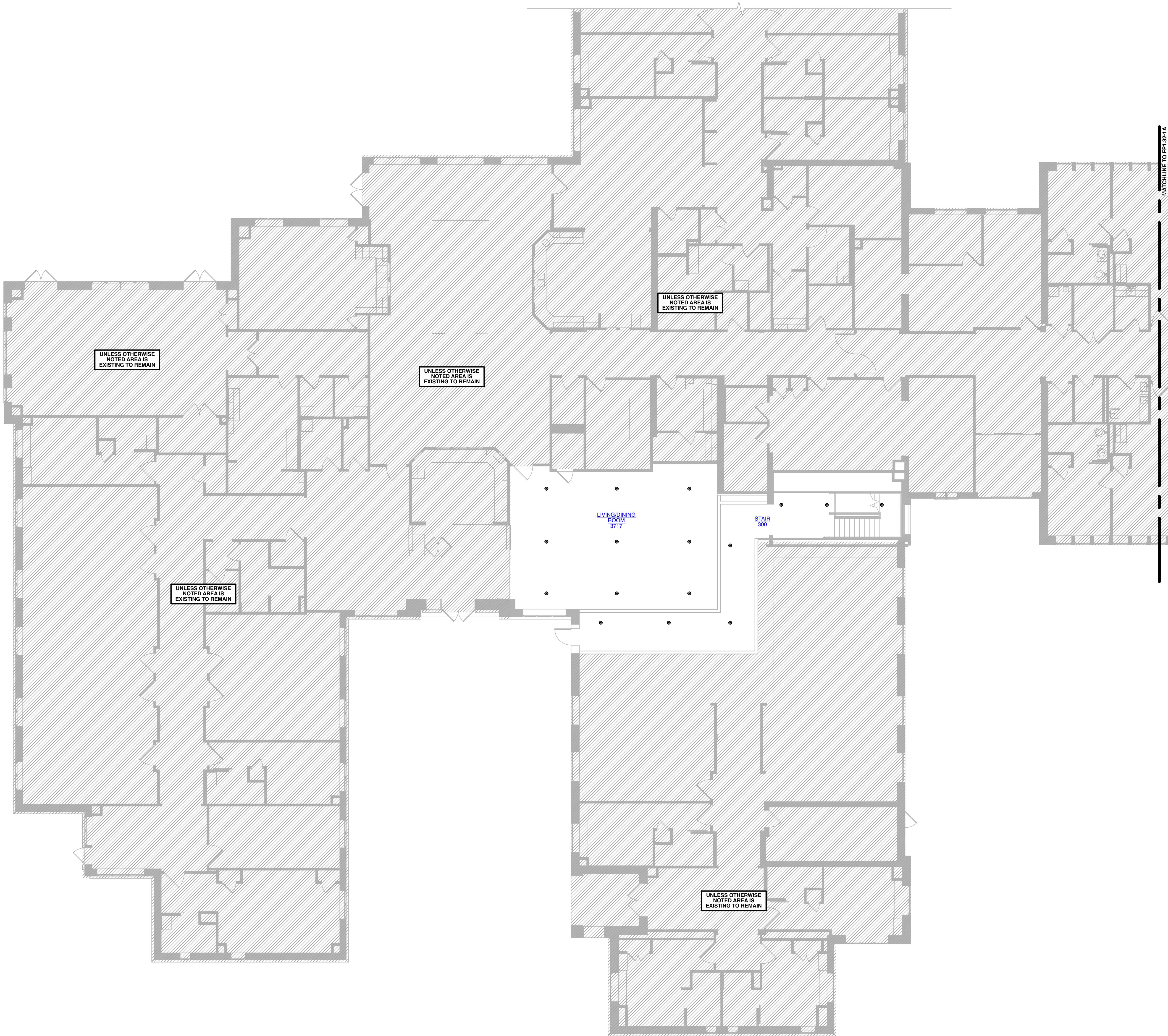
DRAWING TITLE  
**THIRD FLOOR FIRE PROTECTION  
PLAN - AREA 'C'**

DATE:	DRAWING
MAY 28, 2026	FP1.32-1A
COMM. NO.	18135.00

1  
THIRD FLOOR FIRE  
PROTECTION PLAN - AREA  
'C'  
SCALE: 1/8" = 1' - 0"



APPROVAL STAMPS



1  
THIRD FLOOR FIRE PROTECTION PLAN - AREA 'D'  
SCALE: 1/8" = 1' - 0"

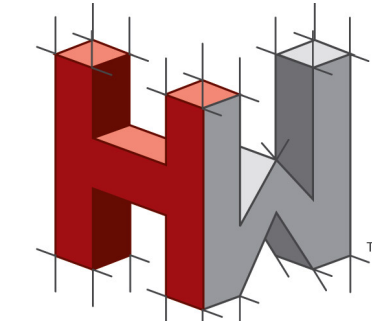
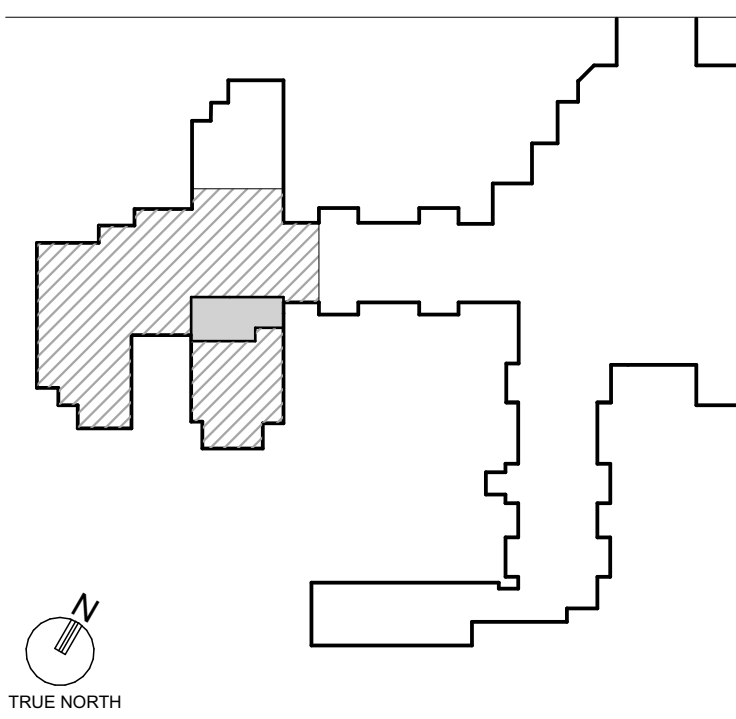
GENERAL NOTES

- COORDINATE ALL SPRINKLER HEAD LOCATIONS WITH LIGHTING, AIR DEVICES AND REFLECTED CEILING PLANS.
- IT IS THE INTENTION TO MAINTAIN THE CEILING HEIGHTS AS SHOWN ON THE REFLECTED CEILING PLANS.
- SPRINKLER PIPING SHOULD BE INSTALLED AS TIGHT AS POSSIBLE TO THE STRUCTURAL FRAMING.
- SPRINKLER CONTRACTOR SHALL COORDINATE THE ROUTING OF ALL PIPING WITH THE LOCATIONS OF ALL PLUMBING PIPING, HVAC DUCTWORK & EQUIPMENT, ELECTRICAL CONDUIT, AND STRUCTURAL ELEMENTS. COORDINATE WITH ALL TRADES INVOLVED IN THE PROJECT.
- DRAWING PLANS, SCHEMATICS, AND DIAGRAMS INDICATE GENERAL SPRINKLER HEAD LOCATIONS. INDICATED HEAD LOCATIONS, CONFIGURATIONS, AND ARRANGEMENTS ARE FOR REFERENCE ONLY. CONTRACTOR IS RESPONSIBLE TO PROVIDE A COMPLETE SET OF COORDINATION DRAWINGS, INCLUDING ALL PIPE ELEVATIONS, PIPE ROUTINGS, ETC. REQUIRED FOR A COMPLETELY COORDINATED INSTALLATION. CONTRACTOR SHALL COORDINATE ALL LOCATIONS WITH ALL TRADES AND A COORDINATED SET OF PLANS. COORDINATION DRAWINGS SHALL BE SUBMITTED TO THE ARCHITECT AND ENGINEER FOR REVIEW PRIOR TO INSTALLATION.
- ALL SPACES SHALL BE FULLY PROTECTED.
- THE FIRE PROTECTION CONTRACTOR SHALL SUBMIT A HEAD LAYOUT TO THE PROPERTY MANAGER FOR REVIEW PRIOR TO ERECTION OF THE WORK.
- FIRE PROTECTION CONTRACTOR SHALL SUBMIT CALCULATIONS, DRAWINGS, AND SHOP DRAWINGS FOR REVIEW BY THE ENGINEER AND SHALL COORDINATE HIS WORK WITH THE OTHER TRADES.
- THE CONTRACTOR SHALL MAINTAIN AS-BUILT DRAWINGS AND DELIVER THEM TO THE OWNER UPON COMPLETION OF THE PROJECT.
- SPRINKLER CONTRACTOR SHALL BE RESPONSIBLE FOR THE CALCULATION, DESIGN, APPROVAL, PERFORMANCE, AND OPERATION OF WET AND/OR DRY FIRE PROTECTION AND/OR SUPPRESSION SYSTEMS. THE PLACEMENT OF THIS INFORMATION ON THE DRAWINGS IS FOR IDENTIFICATION ONLY.
- SPRINKLER CONTRACTOR SHALL PROVIDE A COMPLETE FIRE PROTECTION SYSTEM AS SHOWN ON PLANS AND AS REQUIRED. HE IS SOLELY RESPONSIBLE TO PROVIDE A COMPLETE WORKING SYSTEM DESIGNED AND INSTALLED IN ACCORDANCE WITH NFPA 13, STATE OF PENNSYLVANIA AND LOCAL CODES, AND THE OWNER'S INSURANCE UNDERWRITER'S REQUIREMENT.
- SPRINKLER CONTRACTOR SHALL PAY FOR PERMITS, INSPECTIONS, TESTS AND APPROVALS RELATED TO THE SPRINKLER SYSTEM AS REQUIRED BY ALL AUTHORITIES HAVING JURISDICTION. THIS INCLUDES SUPPLYING ERECTION DRAWINGS TO THE ARCHITECT IN ACCORDANCE WITH THE GENERAL CONDITIONS AND THE MECHANICAL TRADE REQUIREMENTS OF THE PROJECT.
- THE COMPLETE SPRINKLER INSTALLATION SHALL INCLUDE THE FOLLOWING: CONNECTION TO THE FIRE MAINS AS REQUIRED; ALL CONTROL VALVES, CHECK VALVES, ALARM VALVES AND NECESSARY TIE-IN, WATER MOTOR/ONG FLOW SWITCH, APPARATUS AND THE TIE-IN TO THE BUILDING FIRE ALARM SYSTEM; ALL PIPE, VALVES, FITTINGS, AND SPRINKLER HEADS INCLUDING SPARE HEADS IN A CABINET; ALL INSERTS, HANGERS AND SUPPORTS FOR PIPE AND EQUIPMENT; ALL HANGERS AND INSERTS SHALL MEET THE APPROVAL OF ALL AUTHORITIES HAVING JURISDICTION.
- SPRINKLER HEADS SHALL BE APPROVED TYPE OF PROPER TEMPERATURE RATING FOR ITS PARTICULAR LOCATION. FIRE DEPARTMENT CONNECTIONS SHALL BE CHROME PLATED BRASS, WITH CONNECTIONS IN ACCORDANCE WITH THE LOCAL FIRE DEPARTMENT REGULATIONS; ALL CONTROL VALVES, TEST VALVES, AND ALARM VALVES SHALL BE PROVIDED WITH IDENTIFICATION SIGNS OF THE STANDARD DESIGN ADOPTED BY THE AUTOMATIC SPRINKLER INDUSTRY.

FIRE PROTECTION SYMBOLS

- CONCEALED SPRINKLER HEAD W/ COVER PLATE
- x UPRIGHT WET SPRINKLER HEAD
- \*<sub>DN</sub> UPRIGHT DRY SPRINKLER HEAD
- \*<sub>HW</sub> WALL MOUNTED DRY SPRINKLER HEAD

KEYPLAN



HOLSTEIN WHITE  
ENGINEERS

3800 Horizon Blvd., Suite 503 O: (215)-322-7711  
Trevose, PA 19053 F: (215)-322-7709  
www.holsteinwhite.com



Professional Certification. I hereby certify that these documents were prepared or approved by me, and that I am a duly licensed professional engineer under the laws of the State of Maryland, License No. 43254, Expiration Date: 01/15/2027.

PROJECT TITLE  
**Collington**  
A KENDAL AFFILIATE

ENABLING RENOVATION  
CONSTRUCTION DOCUMENTS

**SFCS** Architecture  
Engineering  
Planning  
Interiors

SFCS Inc. • 305 South Jefferson Street  
Roanoke, Virginia 24011.2003  
540.344.6664 • Fax 540.343.6925  
www.sfcs.com

DESIGNER :	DRAWN :	LBEP
ARCHITECT :	CHECKED :	JB
ENGINEER :	LBEP	APPROVED : SW

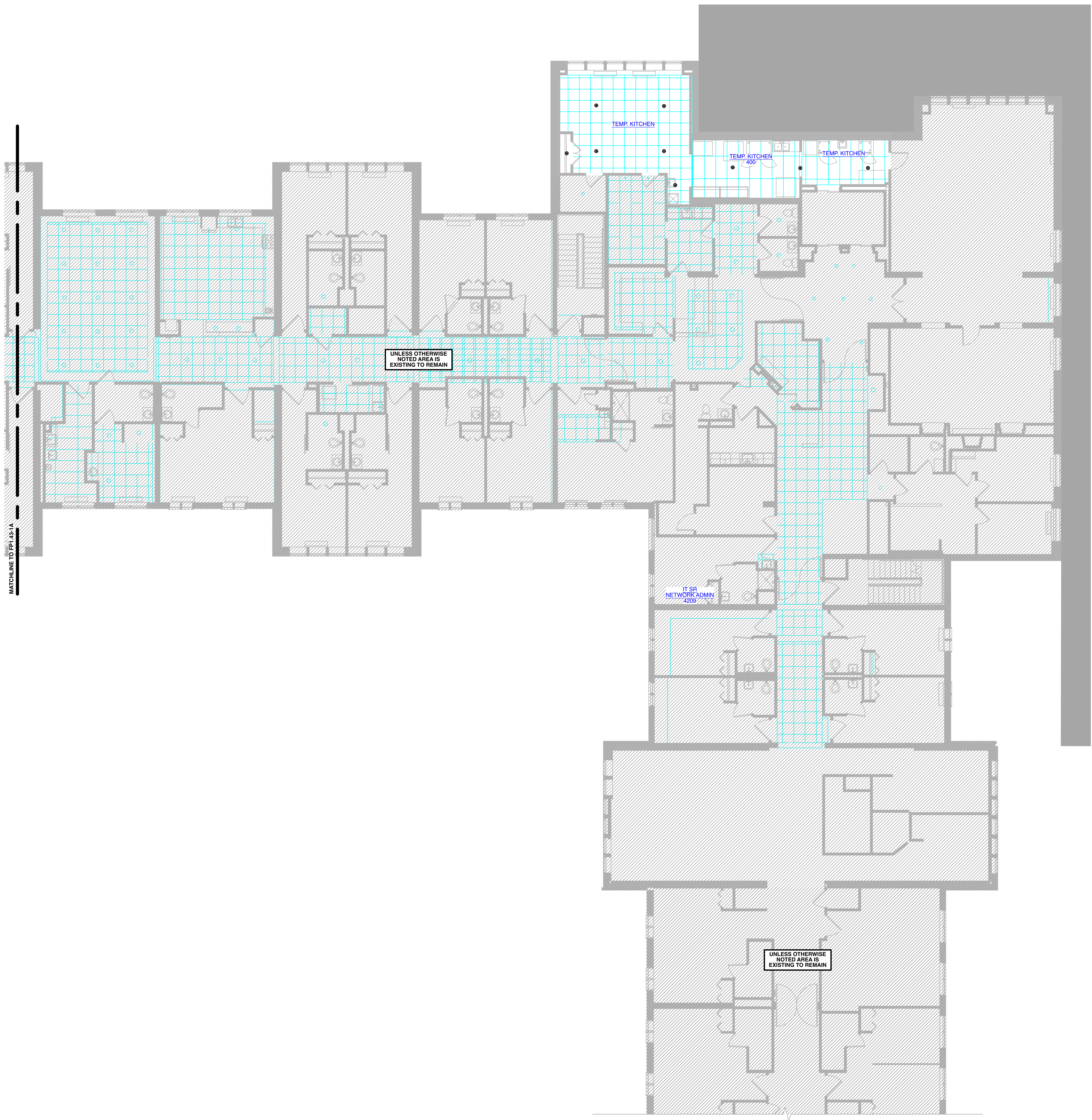
NO.	REVISION DESCRIPTION	DATE
-----	----------------------	------

DRAWING TITLE  
THIRD FLOOR FIRE PROTECTION  
PLAN - AREA 'D'

DATE:	DRAWING
MAY 28, 2026	FP1.33-1A
COMM. NO.	18135.00



APPROVAL STAMPS



1  
FOURTH FLOOR FIRE  
PROTECTION PLAN - AREA  
'C'  
SCALE: 1/8" = 1' - 0"

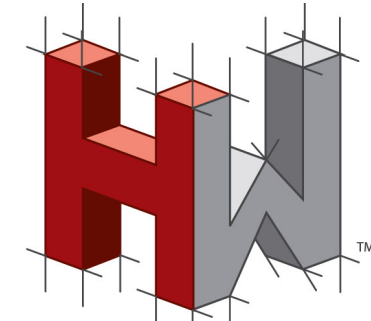
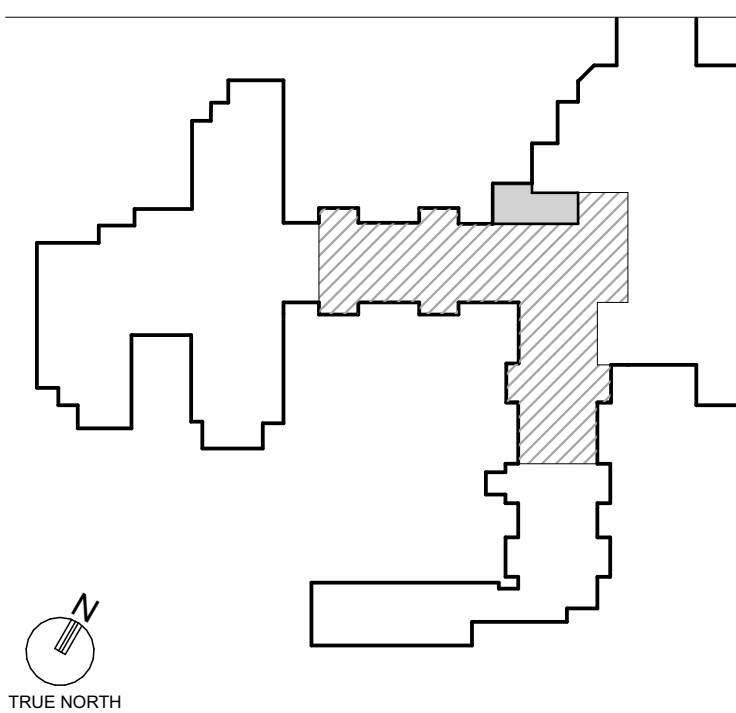
GENERAL NOTES

- COORDINATE ALL SPRINKLER HEAD LOCATIONS WITH LIGHTING, AIR DEVICES, AND REFLECTED CEILING PLANS.
- IT IS THE INTENTION TO MAINTAIN THE CEILING HEIGHTS AS SHOWN ON THE REFLECTED CEILING PLANS.
- SPRINKLER PIPING SHOULD BE INSTALLED AS TIGHT AS POSSIBLE TO THE STRUCTURAL FRAMING.
- SPRINKLER CONTRACTOR SHALL COORDINATE THE ROUTING OF ALL PIPING WITH THE LOCATIONS OF ALL PLUMBING PIPING, HVAC DUCTWORK & EQUIPMENT, ELECTRICAL CONDUIT, AND STRUCTURAL ELEMENTS. COORDINATE WITH ALL TRADES INVOLVED IN THE PROJECT.
- DRAWING PLANS, SCHEMATICS, AND DIAGRAMS INDICATE GENERAL SPRINKLER HEAD LOCATIONS. INDICATED HEAD LOCATIONS, CONFIGURATIONS, AND ARRANGEMENTS ARE FOR REFERENCE ONLY. CONTRACTOR IS RESPONSIBLE TO PROVIDE A COMPLETE SET OF COORDINATION DRAWINGS, INCLUDING ALL PIPE ELEVATIONS, PIPE ROUTINGS, ETC. REQUIRED FOR A COMPLETELY COORDINATED INSTALLATION. CONTRACTOR SHALL COORDINATE ALL LOCATIONS WITH ALL TRADES AND A COORDINATED SET OF PLANS, COORDINATION DRAWINGS SHALL BE SUBMITTED TO THE ARCHITECT AND ENGINEER FOR REVIEW PRIOR TO INSTALLATION.
- ALL SPACES SHALL BE FULLY PROTECTED.
- THE FIRE PROTECTION CONTRACTOR SHALL SUBMIT A HEAD LAYOUT TO THE PROPERTY MANAGER FOR REVIEW PRIOR TO ERECTION OF THE WORK.
- FIRE PROTECTION CONTRACTOR SHALL SUBMIT CALCULATIONS, DRAWINGS, AND SHOP DRAWINGS FOR REVIEW BY THE ENGINEER AND SHALL COORDINATE HIS WORK WITH THE OTHER TRADES.
- THE CONTRACTOR SHALL MAINTAIN AS-BUILT DRAWINGS AND DELIVER THEM TO THE OWNER UPON COMPLETION OF THE PROJECT.
- SPRINKLER CONTRACTOR SHALL BE RESPONSIBLE FOR THE CALCULATION, DESIGN, APPROVAL, CONFORMANCE, AND OPERATION OF WET AND/OR DRY FIRE PROTECTION AND/OR SUPPRESSION SYSTEMS. THE PLACEMENT OF THIS INFORMATION ON THE DRAWINGS IS FOR IDENTIFICATION ONLY.
- SPRINKLER CONTRACTOR SHALL PROVIDE A COMPLETE FIRE PROTECTION SYSTEM AS SHOWN ON PLANS AND AS REQUIRED. HE IS SOLELY RESPONSIBLE TO PROVIDE A COMPLETE WORKING SYSTEM DESIGNED AND INSTALLED IN ACCORDANCE WITH NFPA 13, STATE OF PENNSYLVANIA AND LOCAL CODES, AND THE OWNER'S INSURANCE UNDERWRITER'S REQUIREMENT.
- SPRINKLER CONTRACTOR SHALL PAY FOR PERMITS, INSPECTIONS, TESTS AND APPROVALS RELATED TO THE SPRINKLER SYSTEM AS REQUIRED BY ALL AUTHORITIES HAVING JURISDICTION. THIS INCLUDES SUPPLYING ERECTION DRAWINGS TO THE ARCHITECT IN ACCORDANCE WITH THE GENERAL CONDITIONS AND THE MECHANICAL TRADE REQUIREMENTS OF THE PROJECT.
- THE COMPLETE SPRINKLER INSTALLATION SHALL INCLUDE THE FOLLOWING: CONNECTION TO THE FIRE MAINS AS REQUIRED; ALL CONTROL VALVES, CHECK VALVES, ALARM VALVES AND NECESSARY FIRE WATER MOTOR-DRIVEN FLOW SWITCH APPARATUS AND THE TIE VALVES, FITTINGS, AND SPRINKLER HEADS INCLUDING SPARE HEADS IN A CABINET, ALL INSERTS, HANGERS AND SUPPORTS FOR PIPE AND EQUIPMENT, ALL HANGERS AND INSERTS SHALL MEET THE APPROVAL OF ALL AUTHORITIES HAVING JURISDICTION.
- SPRINKLER HEADS SHALL BE APPROVED TYPE OF PROPER TEMPERATURE RATING FOR ITS PARTICULAR LOCATION. FIRE DEPARTMENT CONNECTIONS SHALL BE CHROME PLATED BRASS, WITH CONNECTIONS IN ACCORDANCE WITH THE LOCAL FIRE DEPARTMENT REGULATIONS. ALL CONTROL VALVES, TEST VALVES, AND ALARM VALVES SHALL BE PROVIDED WITH IDENTIFICATION SIGNS OF THE STANDARD DESIGN ADOPTED BY THE AUTOMATIC SPRINKLER INDUSTRY.

FIRE PROTECTION SYMBOLS

- CONCEALED SPRINKLER HEAD W/ COVER PLATE
- x UPRIGHT WET SPRINKLER HEAD
- x<sub>DH</sub> UPRIGHT DRY SPRINKLER HEAD
- x<sub>DH</sub> WALL MOUNTED DRY SPRINKLER HEAD

KEYPLAN



HOLSTEIN WHITE  
ENGINEERS

3800 Horizon Blvd., Suite 503 O: (215)-322-7711  
Trevose, PA 19053 F: (215)-322-7709  
www.holsteinwhite.com



Professional Certification. I hereby certify that these documents were prepared or approved by me, and that I am a duly licensed professional engineer under the laws of the State of Maryland, License No. 43254, Expiration Date: 01/15/2027

PROJECT TITLE  
**Collington**  
A KENDAL AFFILIATE

ENABLING RENOVATION  
CONSTRUCTION DOCUMENTS

**SFCS** Architecture  
Engineering  
Planning  
Interiors

SFCS Inc. • 305 South Jefferson Street  
Roanoke, Virginia 24011.2003  
540.344.6664 • Fax 540.343.6925  
www.sfcs.com

DESIGNER :	DRAWN :	LBEP
ARCHITECT :	CHECKED :	JB
ENGINEER :	LBEP	APPROVED : SW

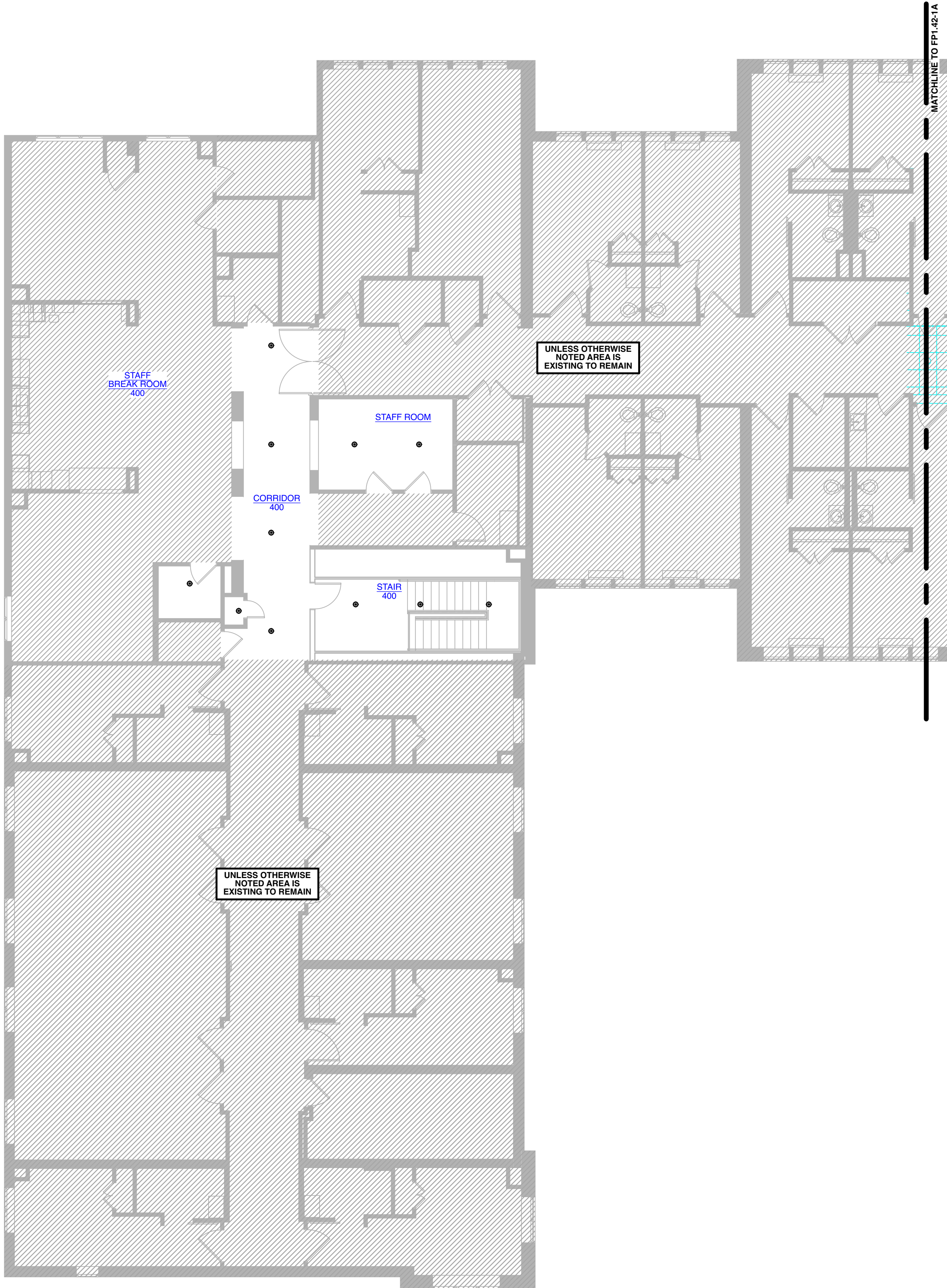
NO.	REVISION DESCRIPTION	DATE
-----	----------------------	------

DRAWING TITLE  
FOURTH FLOOR FIRE  
PROTECTION PLAN - AREA 'C'

DATE:	DRAWING
MAY 28, 2026	FP1.42-1A
COMM. NO.	18135.00



APPROVAL STAMPS



1  
FOURTH FLOOR FIRE PROTECTION PLAN - AREA 'D'  
SCALE: 1/8" = 1' - 0"

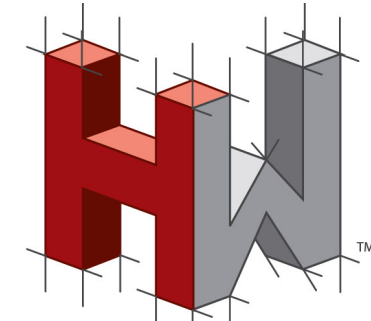
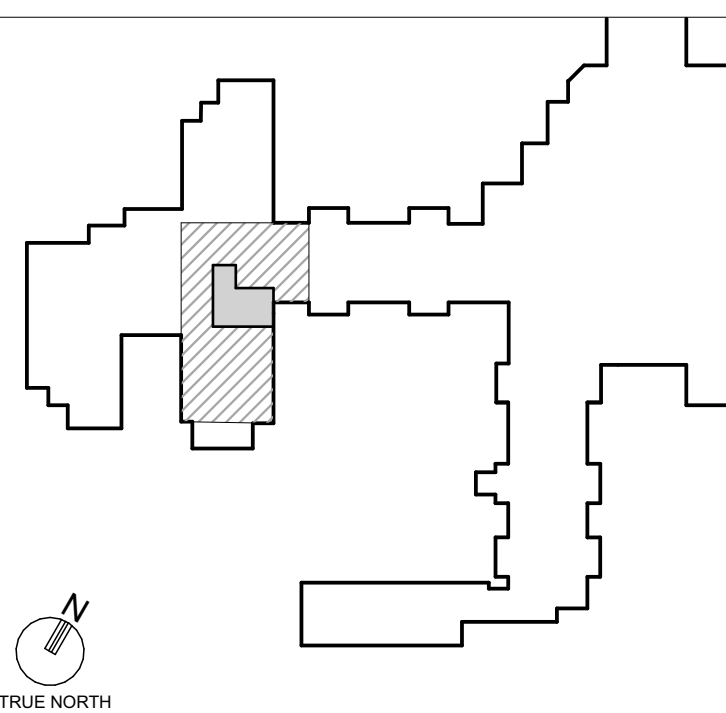
GENERAL NOTES

- COORDINATE ALL SPRINKLER HEAD LOCATIONS WITH LIGHTING, AIR DEVICES, AND REFLECTED CEILING PLANS.
- IT IS THE INTENTION TO MAINTAIN THE CEILING HEIGHTS AS SHOWN ON THE REFLECTED CEILING PLANS.
- SPRINKLER PIPING SHOULD BE INSTALLED AS TIGHT AS POSSIBLE TO THE STRUCTURAL FRAMING.
- SPRINKLER CONTRACTOR SHALL COORDINATE THE ROUTING OF ALL PIPING WITH THE LOCATIONS OF ALL PLUMBING PIPING, HVAC DUCTWORK & EQUIPMENT, ELECTRICAL CONDUIT, AND STRUCTURAL ELEMENTS. COORDINATE WITH ALL TRADES INVOLVED IN THE PROJECT.
- DRAWING PLANS, SCHEMATICS, AND DIAGRAMS INDICATE GENERAL SPRINKLER HEAD LOCATIONS. INDICATED HEAD LOCATIONS, CONFIGURATIONS, AND ARRANGEMENTS ARE FOR REFERENCE ONLY. CONTRACTOR IS RESPONSIBLE TO PROVIDE A COMPLETE SET OF COORDINATION DRAWINGS, INCLUDING ALL PIPE ELEVATIONS, PIPE ROUTINGS, ETC. REQUIRED FOR A COMPLETELY COORDINATED INSTALLATION. CONTRACTOR SHALL COORDINATE ALL LOCATIONS WITH ALL TRADES AND A COORDINATED SET OF PLANS. COORDINATION DRAWINGS SHALL BE SUBMITTED TO THE ARCHITECT AND ENGINEER FOR REVIEW PRIOR TO INSTALLATION.
- ALL SPACES SHALL BE FULLY PROTECTED.
- THE FIRE PROTECTION CONTRACTOR SHALL SUBMIT A HEAD LAYOUT TO THE PROPERTY MANAGER FOR REVIEW PRIOR TO ERECTION OF THE WORK.
- FIRE PROTECTION CONTRACTOR SHALL SUBMIT CALCULATIONS, DRAWINGS, AND SHOP DRAWINGS FOR REVIEW BY THE ENGINEER AND SHALL COORDINATE HIS WORK WITH THE OTHER TRADES.
- THE CONTRACTOR SHALL MAINTAIN AS-BUILT DRAWINGS AND DELIVER THEM TO THE OWNER UPON COMPLETION OF THE PROJECT.
- SPRINKLER CONTRACTOR SHALL BE RESPONSIBLE FOR THE CALCULATION, DESIGN, APPROVAL, CONFORMANCE, AND OPERATION OF WET AND/OR DRY FIRE PROTECTION AND/OR SUPPRESSION SYSTEMS. THE PLACEMENT OF THIS INFORMATION ON THE DRAWINGS IS FOR IDENTIFICATION ONLY.
- SPRINKLER CONTRACTOR SHALL PROVIDE A COMPLETE FIRE PROTECTION SYSTEM AS SHOWN ON PLANS AND AS REQUIRED. HE IS SOLELY RESPONSIBLE TO PROVIDE A COMPLETE WORKING SYSTEM DESIGNED AND INSTALLED IN ACCORDANCE WITH NFPA 13, STATE OF PENNSYLVANIA AND LOCAL CODES, AND THE OWNER'S INSURANCE UNDERWRITER'S REQUIREMENT.
- SPRINKLER CONTRACTOR SHALL PAY FOR PERMITS, INSPECTIONS, TESTS AND APPROVALS RELATED TO THE SPRINKLER SYSTEM AS REQUIRED BY ALL AUTHORITIES HAVING JURISDICTION. THIS INCLUDES SUPPLYING ERECTION DRAWINGS TO THE ARCHITECT IN ACCORDANCE WITH THE GENERAL CONDITIONS AND THE MECHANICAL TRADE REQUIREMENTS OF THE PROJECT.
- THE COMPLETE SPRINKLER INSTALLATION SHALL INCLUDE THE FOLLOWING: CONNECTION TO THE FIRE MAINS AS REQUIRED; ALL CONTROL VALVES, CHECK VALVES, ALARM VALVES AND NECESSARY FIRE-RATE WATER MOTOR-DRIVEN FLOW SWITCH APPARATUS AND THE TRIP VALVES, FITTINGS, AND SPRINKLER HEADS INCLUDING SPARE HEADS IN A CABINET, ALL INSERTS, HANGERS AND SUPPORTS FOR PIPE AND EQUIPMENT, ALL HANGERS AND INSERTS SHALL MEET THE APPROVAL OF ALL AUTHORITIES HAVING JURISDICTION.
- SPRINKLER HEADS SHALL BE APPROVED TYPE OF PROPER TEMPERATURE RATING FOR ITS PARTICULAR LOCATION. FIRE DEPARTMENT CONNECTIONS SHALL BE CHROME PLATED BRASS, WITH CONNECTIONS IN ACCORDANCE WITH THE LOCAL FIRE DEPARTMENT REGULATIONS. ALL CONTROL VALVES, TEST VALVES, AND ALARM VALVES SHALL BE PROVIDED WITH IDENTIFICATION SIGNS OF THE STANDARD DESIGN ADOPTED BY THE AUTOMATIC SPRINKLER INDUSTRY.

FIRE PROTECTION SYMBOLS

- CONCEALED SPRINKLER HEAD W/ COVER PLATE
- x UPRIGHT WET SPRINKLER HEAD
- \*<sub>DN</sub> UPRIGHT DRY SPRINKLER HEAD
- \*<sub>DN</sub> WALL MOUNTED DRY SPRINKLER HEAD

KEYPLAN



HOLSTEIN WHITE  
ENGINEERS

3800 Horizon Blvd., Suite 503 O: (215)-322-7711  
Trevose, PA 19053 F: (215)-322-7709  
www.holsteinwhite.com



Professional Certification: I hereby certify that these documents were prepared or approved by me, and that I am a duly licensed professional engineer under the laws of the State of Maryland, License No. 43259, Expiration Date: 01/15/2027

PROJECT TITLE  
**Collington**  
A KENDAL AFFILIATE

ENABLING RENOVATION  
CONSTRUCTION DOCUMENTS

**SFCS** Architecture  
Engineering  
Planning  
Interiors

SFCS Inc. • 305 South Jefferson Street  
Roanoke, Virginia 24011.2003  
540.344.6664 • Fax 540.343.6925  
www.sfcs.com

DESIGNER :	DRAWN : LBEP	
ARCHITECT :	CHECKED : JB	
ENGINEER : LBEP	APPROVED : SW	
NO.	REVISION DESCRIPTION	DATE

DRAWING TITLE  
FOURTH FLOOR FIRE PROTECTION PLAN - AREA 'D'

DATE:	DRAWING
MAY 28, 2026	FP1.43-1A
COMM. NO.	18135.00